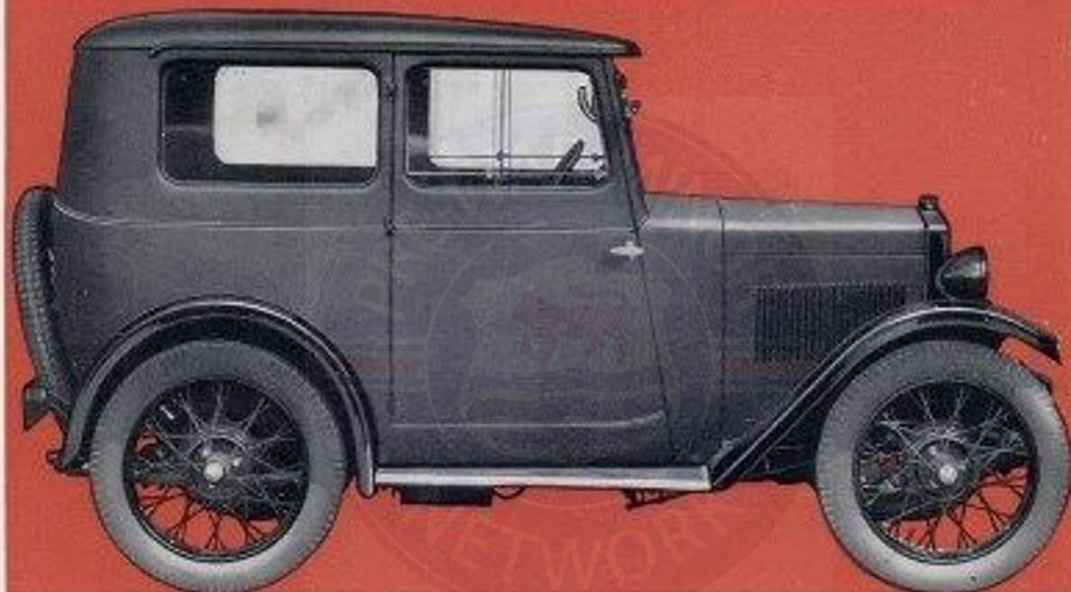


**choose a
car from
the new
Morris Minor
S.V. range**



FABRIC SALOON

The equipment includes:—Two double-panel sliding door-windows, window locks, two quarter-lights and adjustable single-panel windscreen of Triplex glass, adjustable bucket-type front seats, speedometer, oil gauge, two-level petrol tap, automatic windscreen wiper, chassis lubricating pump, driving mirror, progressive shock absorbers on all four wheels, Lucas electric horn, six-volt lighting, starting, and coil ignition set, coil indicator light,

£114

(Ex Works)

combined head- and sidelamps, instrument lamp, license holder, five detachable wire wheels, five Dunlop cord balloon tyres, spare wheel carrier, jack, tyre pump, tool locker and complete kit of tools.

COACHWORK. Black fabric with Red Karhyde upholstery. Radiator and windscreen finished in rust-resisting Black. Triplex safety glass windscreen and windows.



COACHBUILT SALOON (Folding Head)

The equipment includes:—Two double-panel sliding door-windows, two quarter-lights, window locks, folding head, single-panel windscreen, adjustable bucket-type front seats, speedometer, oil gauge, two-level petrol tap, automatic windscreen wiper, chassis lubricating pump, driving mirror, progressive shock absorbers on all wheels, Lucas Sparion electric horn, six-volt lighting, steering, and coil ignition equipment, coil indicator light, combined

£119

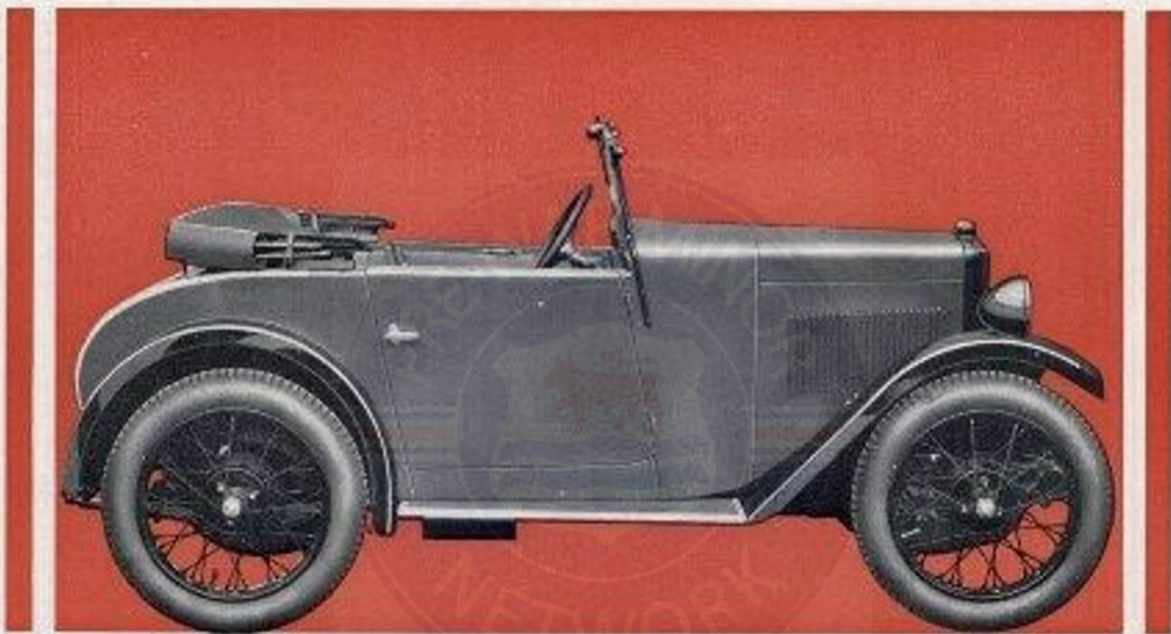
(Ex Works)

head and sidelamps, instrument lamp, license holder, five detachable wire wheels, five Dunlop cord lagoon tyres, spare wheel carrier, jack, tyre pump, tool locker, and complete kit of tools.

COACHWORK. Naval Grey cellulose with Red Katalode upholstery. Radiator and windscreen finished in rust-resisting Black. Triplex safety glass windscreen and windows.

All prices and/or specifications are subject to alteration without notice.

THE MORRIS MINOR S.V.



COACHBUILT TWO-SEATER

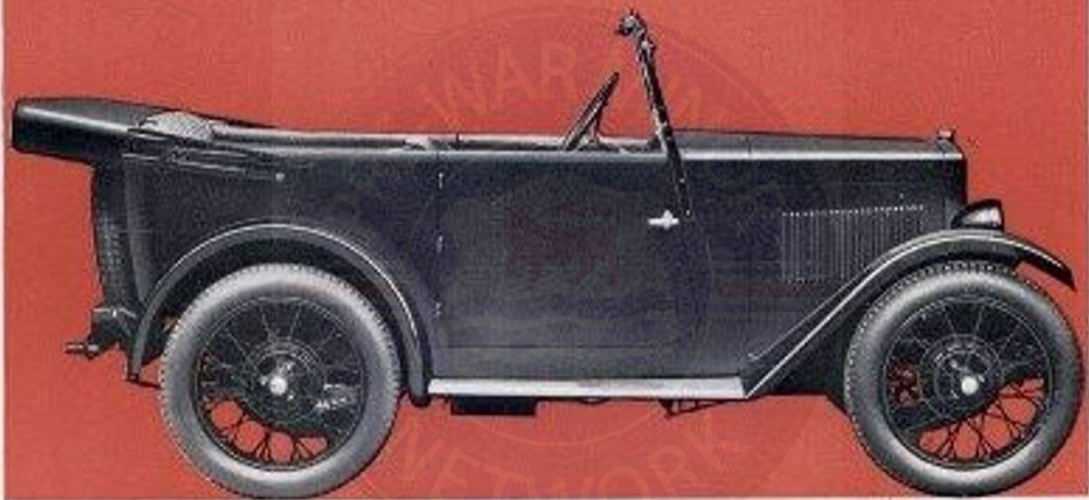
The equipment includes:—Hood and sidescreens with signalling panel, hood cover, single-panel Triplex glass windscreen, speedometer, oil gauge, two-level petrol tap, automatic windscreen wiper, pressure lubricating system, license holder, driving mirror, progressive shock absorbers on all four wheels, Lucas Sparton electric horn, six-volt lighting, starting, and coil ignition set, coil indicator light,

£100

(Ex Works)

combined head- and sidescreens, instrument lamp, five detachable wire wheels, low Dunlop cord balloon tyres, spare wheel carrier (in rear locker), jack, tyre pump and complete tool kit.

COACHWORK. Naval Grey cellulose with Red Karlyde upholstery. Radiator and windscreen in rust-resisting Black finish. Triplex safety glass windscreen.



COACHBUILT TOURER

The equipment includes:—Hood and sidescrims with signalling panels, hood cover, single-panel Triplic glass windscreen, speedometer, oil gauge, two-level petrol tap, automatic windscreen wiper, pressure lubricating pump, license holder, driving mirror, progressive shock absorbers on all four wheels, Lucas Sparta electric horn, six-volt lighting, starting, and coil ignition set, coil indicator light.

£112 10s.

(Ex Works)

combined head- and sidelamps, instrument lamp, five detachable wire wheels, five Dunlop cord balloon tyres, spare wheel carrier, jack, tyre pump and complete tool kit.

COACHWORK. Naval Grey cellulose with Blue Karbye upholstery. Radiator and windscreen in rust-resisting Black finish. Triplic safety glass windscreen.